

CRUSH INJURY LOST TIME RIDDOR

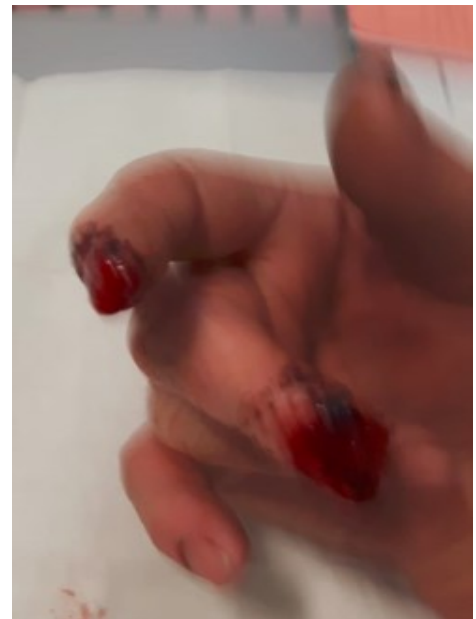
For attention of: All Staff

Overview:

Last week a member of staff suffered a significant injury to his fingers as a result of an accident while transporting a Universal Track Access System (UTAS) within its cage. The UTAS is an steel on/off tracking facility for Road/Rail machines and weighs approximately 2 tonnes.

The IP, who was working as a POS, was holding the cage as it struck the wheel of the RRV and the UTAS shifted within the cage, trapping 2 fingers on his right hand.

The IP suffered a crush injury and partial amputation of the tip of one finger. He was taken to Derby hospital to which he



Above: Injury

Left: UTAS unit in cage; total weight 2.5 tonnes



Immediate Action Required:

- Brief staff about the accident
- What are the rules about exclusion zones? Who controls the exclusion zone?
- Should the IP have been holding on to the cage?
- Ask what actions they would have taken and if they would have done anything different?

For further information please contact: iptracksandsd@networkrail.co.uk