

RIDDOR dangerous occurrence scaffold failure

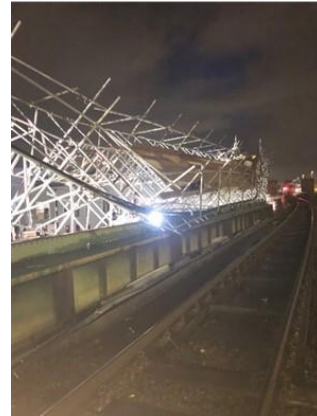
Issued to: **Network Rail line managers,
safety professionals and
accredited contractors**

Ref: NRA21-13

Date of issue: 24/08/2021

Location: Warrington

Contact: [Matt Dean](#), Head of HSE CD
NW&C



Overview

In the early hours of Sunday 8th August, a service scaffold bridge partially collapsed while being installed. It came to rest on the bridge parapet.

At the time of the incident, the two scaffolders were adding the scaffold boards, they were both able to exit without injury. An exclusion zone was in place underneath the structure and the work was in an engineering possession.

The line was blocked to allow the scaffold to be safely lifted and removed.

The scaffold structure is in quarantine and an investigation has started. The Office of Rail and Road (ORR) was notified.

Immediate action required

Scaffold design:

- Ensure a construction sequence is fully documented and communicated to those undertaking the work.

Scaffold in construction, ensure that:

- the planned construction sequence is followed.
- a permit to load is in place before any load is applied.

- where all scaffolds are left in a temporary state of construction, they are stable and fit for purpose.
- any changes to scaffold design go back through the design approval process.
- these checks do not supersede or replace those undertaken by a competent scaffolder holding a CISRS Advanced Scaffold Inspectors card.