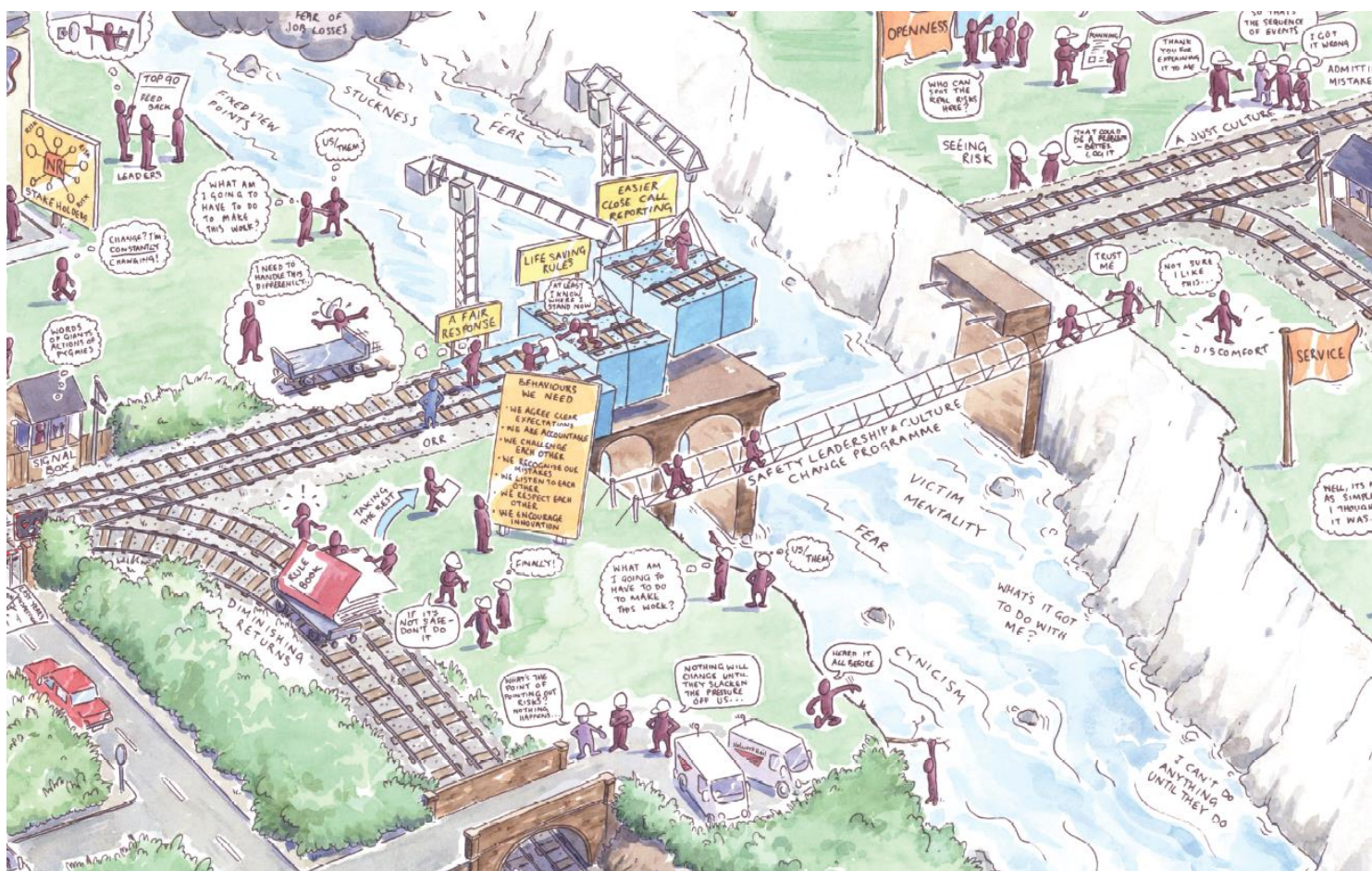


Work Related Pressure

An Industry Survey

Pressures are always present in any work activity but **ISLG** recognises that there are different types and levels of pressure across the rail industry and that individuals respond differently to different levels of pressure.



TELL US YOUR STORY – TAKE PART IN OUR SURVEY

Scan here:



Or visit: <https://www.research.net/r/9MV575H>

The survey is anonymous for both individuals and employers. ISLG will collate the results of the survey, publish them on its website and share them with the wider industry groups so that, with your help, can decide what needs to be done next.

Survey Closes 15th May 2016